



# INSTRUCTION MANUAL

DNHP-60S(Standard)

DNHP-60 PRO

DNHP-60 SR3

DNHP-50 PRO

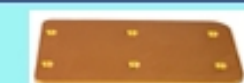
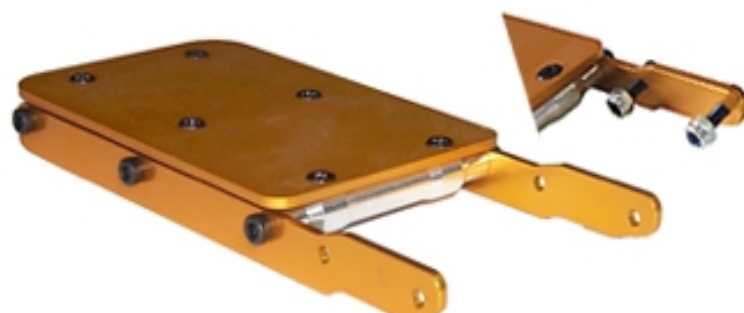
DNHP-50 SR3

DNHP-50RF PRO

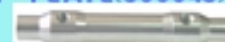
DNHP-50RF SR3



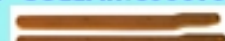
### A-1-1 Front Plate



F- PLATE(500043)x1



F-COLLAR(500076)x3



F-P GUIDE(HP0042)x2

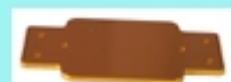
- M3x8 B x10

- M3 NUT B x4

- M3 F CAP B x4

- M3 F CAP B x4

### A-1-2 Front Gyro Mount(SR3)



GYRO PLATE(HP0039)

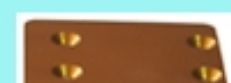


G-M COLLAR(HP0075)x2

- M3x6 B. x4

- M3x8 B. x4

### A-1-3 Rear Gyro Mount(SR3)



GYRO PLATE(HP0040)



G-M COLLAR(500043)x2

- M3 F CAP Bx4

-M3x8 B x4



**B-1-1**

## CLUTCH BELL ASS'Y



HEX((HP0005)



PINI-HOUSING(HP6002)



CLUTCH BELL(603220)



BEARING(695zz)



BEARING(63800zz)



HEX BOLT(4x5) x1



M3x8 B. x4



WASHER(3x8) x4



POLY WASHER x1



START SHAFT(HP0006)



## TAIL PINION HOUSING ASS'Y



TAIL PINION  
(HP0009)



TAIL F-GEAR  
(040007)



HOUSING(HP6003)x2



686ZZ  
(2EA)



M3 NUT x1



M3x10 B. x8

M3 BOLT(16M)



WASHER(3x8)x4

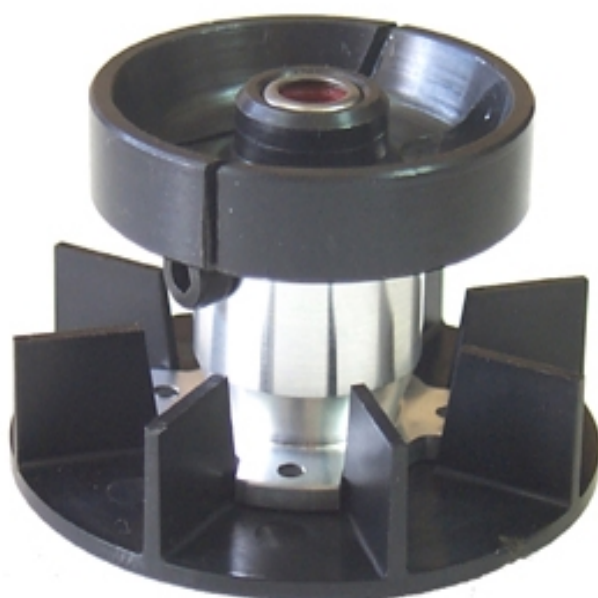
BACK

NEXT

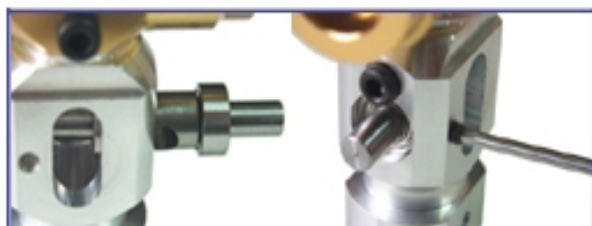
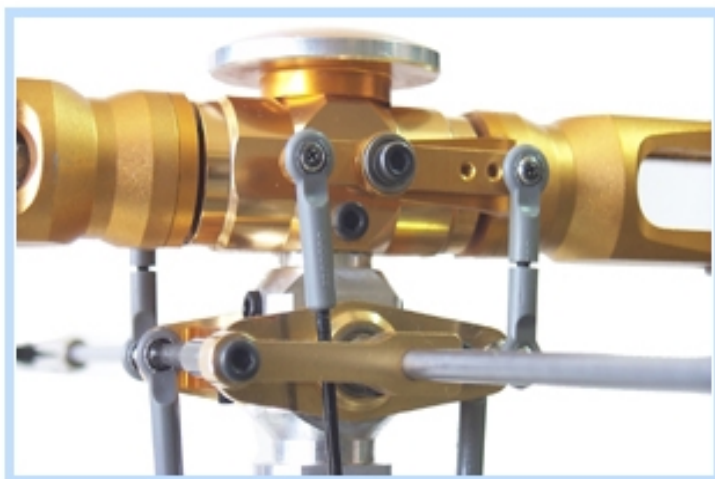
### **B-1-3** MAIN GEAR & HOUSING ASS'Y



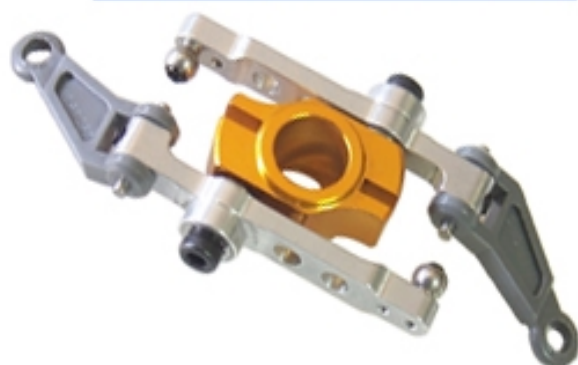
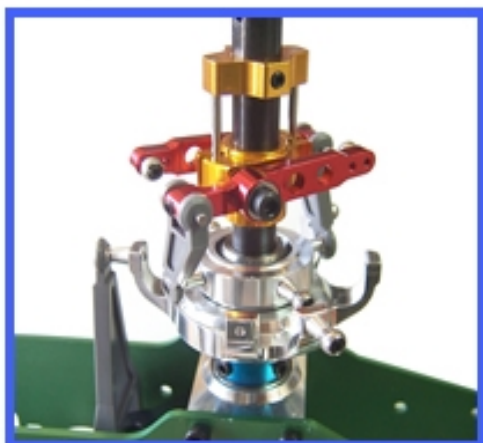
### **B-1-4** FAN HOUSING & CLUTCH ASS'Y



**C-1-1 EX-HEAD PRO ASS'Y**



## **D-1-1** SWASH & WASH OUT ASS'Y



## **D-1-2** FUEL TANK ASS'Y

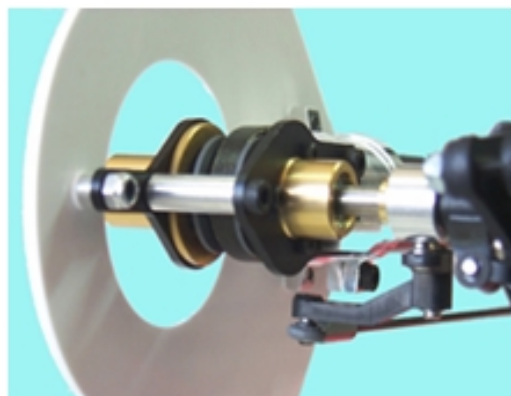


### ACCESSORY



## E-1-1

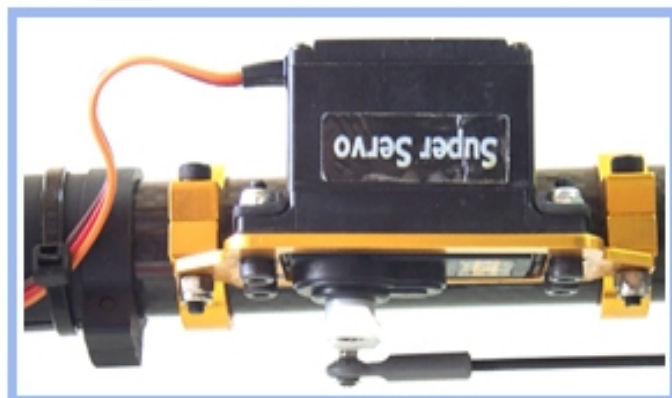
## TAIL HOUSING ASS'Y



## E-1-2 TAIL ASSEMBLY



## E-1-3 RUDDER REAR MOUNT ASS'Y





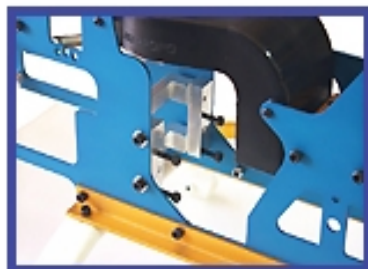
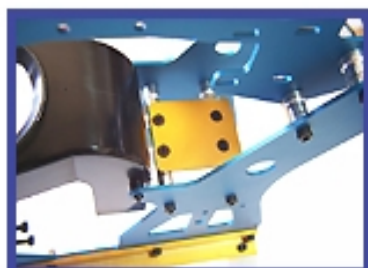
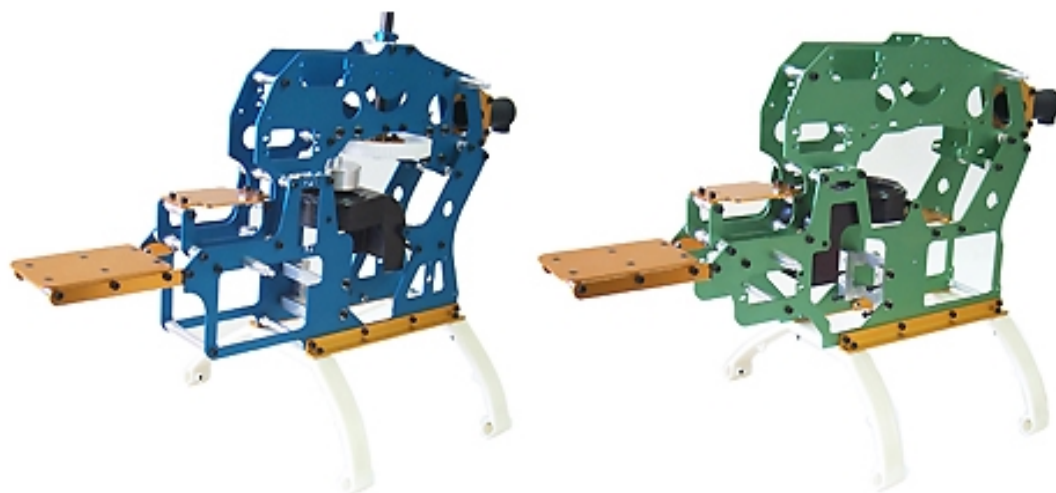
## **E-1-4** TAIL SUPPORT & WING ASS'Y





**F-1-1**

## FRAME ASS'Y (Photo Information)



# **DNHP** DNHP INSTRUCTION MANUAL

---

